

F.No. 8-6/2016-RMSA-IV/VE  
Government of India  
Ministry of Human Resource Development  
Department of School Education & Literacy

**Minutes of the meeting held on 11<sup>th</sup> March, 2016 for approval of Annual Work Plan & Budget 2016-17 of Haryana under the Centrally sponsored scheme of the Rashtriya Madhyamik Shiksha Abhiyan (RMSA)**

A meeting of the Project Approval Board of the RMSA to consider the Annual Work Plan & Budget 2016-17 of the state of Haryana was held on the 11<sup>th</sup> March 2016 under the Chairmanship of Dr. S.C.Khuntia, Secretary (School Education & Literacy).

2. The list of participants who attended the meeting is at **Annexure I**

3. Secretary (SE&L) welcomed the participants. In his opening remarks, he appreciated the efforts of the State and the overall progress made by the State under RMSA. The State was advised to ensure maintenance of the toilets under the Swachh Vidyalaya initiative in convergence with the Department of Rural Development and Panchayati Raj. JS (SE-I) highlighted the overall status of secondary education scenario in the State, areas of concern and details of the proposal of Annual Work Plan and Budget (AWP&B) for RMSA for 2016-17. A copy of the presentation is at **Annexure II**.

4. Discussions were held on the areas of concern, point wise as follows:

**Educational indicators:**

- GER has decreased from 84.25% in the year 2014-15 to 81.35% in the year 2015-16.
- NER has decreased from 49.42% in the year 2014-15 to 48.92% in the year 2015-16.
- The dropout rate in the year 2015-16 is 5.34%. State has not provided the dropout rate for the years 2012-13, 2013-14 and 2014-15.
- The transition rate has decreased from 94.27% during 2014-15 to 92.90% during 2015-16.
- Gross Access Ratio (GAR) at the State level is 88.94%. West Mewat (62.55%), and Palwal (64.94%) Districts are having very low Gross Access Ratio, which is an area of concern.
- The State was advised to look into the factors leading to decrease in GER, NER and transition rate and take remedial action. The districts having low GAR may be given priority.

**Learning achievement:**

- As per National Achievement Survey (NAS), 50% students have a score below 34% in all subjects which is an area of concern. The State was asked to take corrective measures in the form of remedial teaching for the students during vacations and weekends before they are promoted to secondary level. However the PAB appreciated the fact that the State has identified the learning indicators for classes IX and X.

**Teachers/Quality:**

- Out of 3258 schools, 1657 (51%) schools have less than 5 teachers. The State was asked to rationalize the distribution of teachers in the rural areas to address the gap.
- The State was advised to secure direct recruitment posts for HMs besides promotion to ensure quality in school administration.

**Access:**

- The State was asked to complete GIS mapping exercise by end of March 2016 and identify the gaps in access and also the teacher distribution in rural areas through the detailed mapping exercise. The same has to be reported to MHRD by April 2016. The total number of habitations served and unserved have been reported on the basis of manual mapping.

**New Schools:** Out of 58 new schools approved, 50 are functional. The State committed to make the rest of the schools functional in the next academic year i.e. 2016-17.

**ICT:** The State has not undertaken the third party evaluation of 902 schools approved in 2009-10 and 1609 schools approved in 2010-11. However, the State clarified that a National Agency has already been identified to conduct the third party evaluation.

**GH:** Out of 36 Girls Hostels approved, only 2 were reported functional. However, the State committed to make 33 under construction hostels functional in the next academic year i.e. 2016-17. Thus the PAB suggested that the recurring amount approved should be reimbursed once the hostels are functional.

**VE:** The PAB observed delay in procurement process. However, the State has committed to make all VE laboratories functional by April, 2016.

5. Based on the intervention wise discussion, the following decisions were taken and approvals were accorded:

<b>Sl. No.</b>	<b>Activities</b>
	<b>Non recurring</b>
	<b>Committed Outlay</b>
	Under RMSA, cancellation of 4 new schools (one 1 section and three 2 Section schools) was approved against which no civil works have been undertaken. The total amount surrendered under new schools is <b>Rs. 221.22 lakh.</b>
	Under strengthening, cancellation of 143 schools was approved. The total amount surrendered is <b>Rs. 3070.66 lakh.</b>
	<b>New Approvals</b>
<b>1</b>	<b>RMSA Non-recurring</b>
<b>1.1 &amp;1.2</b>	<b>Buildings for New Schools already approved in previous years:</b> Civil works for 2 new schools were approved at revised SOR of Rs. 67.15 lakh for 1 Section school and Rs. 71.82 lakh for 2 section school. The total amount

	approved under new schools is <b>Rs. 138.97 lakh.</b>
<b>2.1 to 2.7</b>	<b>Strengthening:</b> Interventions for strengthening were approved in 15 schools @ revised SOR against the cancellation of 143 schools. Against the fresh proposal for 72 schools under strengthening, 58 schools were approved. The total amount approved under strengthening is <b>Rs. 1218 lakh.</b>
	<b>RMSA Recurring</b>
<b>3</b>	<b>School Grant</b>
<b>3.1</b>	Out of 3245 schools proposed by the state, all schools with enrollment were approved for school grant with a total outlay of <b>Rs. 1622.50 lakh.</b>
<b>4</b>	<b>Financial support for salary for the staff of the previously approved schools</b>
<b>4.1 &amp; 4.2</b>	Financial support for salary for 12 months for 29 vacant posts of HMs was approved @25% of total salary with a total outlay of <b>Rs. 41.84 lakh</b> and financial support for salary for 29 HMs in position was approved with a total outlay of <b>Rs. 167.35 lakh.</b> The salary for the vacant posts will be released after the requisite documents such as appointment orders, details of salary etc. are furnished by the State.
<b>4.3 &amp; 4.4</b>	Financial support for salary for 12 months for 99 subject teachers in position as per UDISE 2014-15 was approved with a total outlay of <b>Rs. 378.15 lakh</b> and financial support for salary of 191 vacant posts of teachers, was approved @25% of total salary with an outlay of <b>Rs. 182.39 lakh.</b> Grant for salary of the vacant posts will be released after the requisite documents such as appointment orders, details of salary etc. are furnished by the State.
<b>5</b>	<b>Additional staff for existing schools sanctioned till 2015-16:</b>
<b>5.1</b>	Out of total 7223 additional teacher posts approved, financial support for salary for 12 months for 7223 subject teachers in position was approved @Rs. 31,831 per month per teacher with a total outlay of <b>Rs. 27589.84 lakh.</b> However, there are 847 vacancies of teachers in the state cadre and the State was asked to fill-up these vacant posts at the earliest.
<b>6</b>	<b>Community Mobilisation</b>
<b>6.1</b>	SMDC training for two day was approved for 38 standalone schools with total outlay of <b>Rs. 3.648 lakh.</b>
<b>7</b>	<b>Training</b>
<b>7.1</b>	10 days inservice training for 1231 teachers (622 Maths & 609 Science teachers) @Rs. 300/teacher/day was approved with a total outlay of <b>Rs. 36.93 lakh.</b>
<b>7.2</b>	30 days residential School Leadership management course for 25 members

	was approved with a total outlay of <b>Rs. 3.00 lakh</b> @ Rs. 12,000 per member.
<b>7.3</b>	3 days training for 21 DEOs @ Rs. 900/DEO was approved with a total outlay of <b>Rs. 0.19 lakh.</b>
<b>7.4</b>	12 days School Leadership Training for 100 head masters @Rs. 300/- per HM per day was approved with a total outlay of <b>Rs. 3.60 lakh.</b>
<b>8</b>	<b>Other Quality interventions</b>
<b>8.1</b>	An amount of <b>Rs. 163.87 lakh</b> was approved for developing question banks at schools with special focus on science and maths @Rs. 5050/- per school for 3245 schools.
<b>9</b>	<b>Project on Science and Maths (Rahstriya Avishkar Abhiyan)</b>
<b>9.1</b>	Excursion trip for 2100 students within State (100 students per district for 21 districts) was approved @ Rs. 200/day for students to visit higher institutions within the State with a total outlay of <b>Rs. 4.20 lakh.</b>
<b>9.2</b>	Remedial teaching was approved @ Rs. 500/- per student for 20% of total enrollment of class IX i.e 42,323 students with focus on mathematics, science and english with a total outlay of <b>Rs. 211.61 lakh.</b>
<b>9.3</b>	District level Science Exhibition / Book Fair was approved for all 21 districts @ Rs. 1 lakh / district with a total outlay of <b>Rs. 21.00 lakh.</b>
<b>9.4</b>	1 Science Kit per school for each of the 3245 govt. secondary schools was approved with a total outlay of <b>Rs. 51.60 lakh.</b>
<b>10</b>	<b>Project on English</b>
<b>10.1</b>	10 days training for 432 English Subject Teachers as per UDISE was approved with a total outlay of <b>Rs. 1.30 lakh.</b>
<b>11</b>	<b>Project Kala Utsav</b>
<b>11.1</b>	As per norms under RMSA for Kala Utsav, an outlay of Rs. 10 lakh was approved for the State and District level events along with Rs. 1 lakh as travel allowance for 50 students/escorts @ Rs. 2000/- per person for the National level event. The total approval under Kala Utsav is <b>Rs. 11.00 lakh.</b>
<b>12</b>	<b>Sports and tournaments</b>
<b>12.1</b>	District level sports tournaments were approved for 21 districts @ Rs.0.50 lakh/district with a total outlay of <b>Rs.10.50 lakh.</b>
<b>13</b>	<b>Girls' Empowerment</b>
<b>13.1</b>	Career guidance programme for girls was approved @ Rs. 50000/- per block for 10 blocks with a total outlay of <b>Rs. 5.00 lakh.</b>

13.2	3 month martial arts training for 1000 schools @ Rs. 3000/- per school per month with a total outlay of <b>Rs. 90.00 lakh</b> was approved.
	<b>ICT</b>
	<b>Non-recurring</b>
14	<b>Boot Model</b>
14.1	Non-recurring support for 87 schools was approved @ Rs. 6.40 lakh per school with a total outlay of <b>Rs. 556.80 lakh</b> . List of 87 schools is at <b>Annexure - III</b> .
	<b>Recurring</b>
15 & 16	4 <sup>th</sup> year recurring grant for 1609 schools implemented in the year 2012-13 was approved @ Rs. 2.40 lakh per school with a total outlay of <b>Rs. 3861.60 lakh</b> . The recurring grant will be released subject to submission of item wise expenditure statement.
	<b>IEDSS</b>
17	<b>Recurring</b>
17.1	Environment Building programme was approved for 119 blocks @Rs. 10,000/- per block with a total outlay of <b>Rs. 11.90 lakh</b> .
17.2	10 days in service training for 300 in-position special teachers was approved @Rs. 300/- per day with a total outlay of <b>Rs. 9.00 lakh</b> .
17.3	3 day orientation of 7000 Principals, Educational administrators, parents / guardians etc. was approved @Rs. 300/- per person per day with a total outlay of <b>Rs. 63.00 lakh</b> .
	<b>Salary for Special Educators under IEDSS</b>
17.4	Financial support for salary of 135 new special educators who are yet to be recruited was approved @25% of the total salary with a total outlay of <b>Rs. 91.80 lakh</b> . The grant will be released after the requisite documents such as appointment orders, details of salary etc. are furnished by the state.
17.5	Financial Support for salary was approved for previously appointed spl. educators for 12 months with 5% increment for 3 categories of special educators with a total outlay of <b>Rs. 777.91 lakh</b> .
17.6	Special pay for special educators was approved @ Rs. 400/- per educator for 12 months for 300 in-position special educators with a total outlay of <b>Rs. 14.40 lakh</b> .
18	<b>Recurring grant for Student Oriented components under IEDSS</b>

18.1 to 18.5	Support to 4555 CWSN (excluding 216 CWSN with learning disability) under Student Oriented Component was approved @Rs. 3000/- per CWSN with a total outlay of <b>Rs. 134.97 lakh.</b>
	<b>VE</b>
	<b>Non-recurring</b>
<b>19</b>	<b>Introduction of VE in schools</b>
19.1	PAB approved 500 schools for introduction of Vocational Education: Tool equipments for 500 schools were approved with an outlay of <b>Rs. 3033.00 lakh.</b> List of 500 new schools is at <b>Annexure - IV.</b>
19.2	Total 95 labs were approved at the proposed cost for civil works with total outlay of <b>Rs. 475.00 lakh.</b> Remaining laboratories are to be constructed with available resources with the State.
	<b>Recurring</b>
20.1 to 20.4	<b>Recurring grant under VE for 490 previously approved schools</b> (Raw materials, office expenses and cost of providing hands on training to students, assessment and certification) was approved with an outlay of <b>Rs. 2588.03 lakh.</b>
20.5 to 20.8	<b>Recurring grant for 500 new VE schools</b> (Raw materials, office expenses and cost of providing hands on training to students, assessment and certification) with a total outlay of <b>Rs. 1187.50 lakh</b> was approved.
20.9 & 20.10	Financial support as Flexi Pool for engaging 490 Resource persons in the <b>previously approved schools</b> was approved with a total outlay of <b>Rs. 4603.75 lakh</b> and financial support as flexi pool for engaging 500 resource persons in the <b>500 new schools</b> was approved with a total outlay of <b>Rs. 3625.00 lakh.</b>
<b>21</b>	<b>Teacher Training</b>
21.1	1 week in-service Training of Teachers @ Rs. 3000/teacher for 1360 teachers of 490 previously implemented schools was approved with a total outlay of <b>Rs. 40.80 lakh.</b>
21.2	4 Week induction training for 1000 teachers of newly approved 500 schools was approved @ Rs. 11000 per teacher with a total outlay of <b>Rs. 110.00 lakh.</b>
	<b>GH</b>
	<b>Recurring</b>
22.1 to 22.11	Based on the commitment given by the State that 33 Girls Hostels will be functional from the academic year 2016-17, recurring grant for 33 Girls Hostels was approved with a total outlay of <b>Rs. 674.36 lakh.</b>
<b>23.</b>	<b>MMER</b>

MMER was approved @3.5% with total financial implication of <b>Rs. 1883.53 lakh.</b>
--

6. The status of financial details including committed liabilities of the previous years and spill over there of, new approvals for recurring and non recurring components against the proposals of the State are summarized in the following table:

(Rs. in Lakhs)

Scheme	Approval 2016-17			Spill over	Total Budget
	NR	Rec. (including MMER)*	Total		
<b>RMSA</b>	1356.97	32483.04	33840.01	51368.02	85208.03
<b>ICT@school</b>	556.80	3861.60	4418.40	171.83	4590.23
<b>IEDSS</b>	0.00	1102.98	1102.98	504.50	1607.48
<b>Vocational Education</b>	3508.00	12155.08	15663.08	5370.27	21033.35
<b>Girls Hostel</b>	0.00	674.36	674.36	487.31	1161.67
<b>Total</b>	5421.77	50277.06	55698.83	57901.93	113600.76

\*Total outlay for MMER – Rs. 1883.53 lakh

7. The Cost sheet indicating the component wise approval for RMSA for 2016-17 is at **Annexure V**.

8. The release of funds to different schemes will be further guided by the following conditions:

- (i) The State administration will give a written commitment for meeting its share of the budget approved according to the prescribed sharing pattern. The budget provision may also be communicated to the Ministry invariably after presentation of the State budget.
- (ii) SMDCs should be constituted in all schools and bank accounts, may be opened by them to take care of school grant, civil works, and other such expenditures.
- (iii) The first installment would be released based on provisional Utilization Certificate for 2015-16 and subject to full release of proportionate State share corresponding to GOI share released during the previous financial year.
- (iv) The second installment would be released only after (a) the proportionate installment of State/UT share has been released, (b) at least 50% expenditure against available funds has been incurred, (c) utilization certificate has been submitted for funds released in the year 2015-16 and (d) Audit Reports have been submitted for the year 2014-15.

9. The meeting ended with a vote of thanks to the chair.

**List of participants**

1. Dr. Subhash Chandra Khuntia  
Secretary (SE&L), MHRD
2. Shri Maneesh Garg  
Joint Secretary, Secondary Education, MHRD
3. Ms. Darshana M Dabral  
Joint Seceratry and Financial Advisor, MHRD
4. Shri P.P. Gupta  
Deputy Secretary, RMSA-IV, MHRD
5. Mr. Sushil Bhushan  
Under Secretary, RMSA-IV, MHRD

**Representatives from the State Haryana**

1. Smt. Keshni Anand Arora, IAS  
Additional Chief Secretary, Govt. of Haryana, School Education Department
2. Sh. Alok Verma, IFS  
State Project Director
3. Sh. V.S. Malik  
Executive Engineer
4. Dr. Bal Kishan Yadav  
Consultant (Planning)
5. Sh. K.K. Agnihotri  
Honorary Advisor
6. Sh. S.K. Sharma  
Consultant (IEC)
7. Sh. Rajiv Vats  
Consultant (Monitoring)
8. Sh. Rajneesh Sharma  
Coordinator (IED)
9. Smt. Kalpana  
Consultant (Pedagogy)
10. Sh. Surender Rathi  
Associate Consultant (Pedagogy)
11. Ms. Mukta Tanwar  
Associate Consultant (Gender)
12. Sh. Maan Singh  
Programmer

**Representatives of other organizations**

Concerned consultants from TSG, NCERT and NUEPA





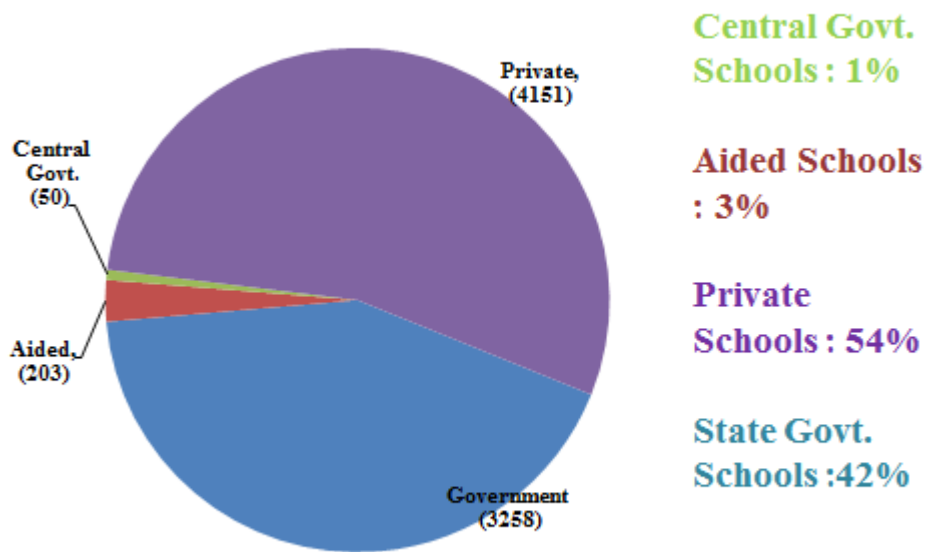
## Presentation on Appraisal Report Haryana

Project Approval Board Meeting 2016-17  
11<sup>th</sup> March, 2016  
(RMSA, IEDSS, ICT @ School, Girls Hostel & VE)

### State Education Profile-Secondary Schools

No. of districts: 21		Pass % of class x: 2014= 59.40% 2015= 62.53%
Blocks : 119		Gender Gap: 12
EBBs: 36		NER at Sec. level: 50.28%
SFDs: 04 (2 SC + 1 Minority + 1 SC and Minority)		Total Enrolment in all Sec. Schools: 879090
GPI: 0.99		GER at Sec. level: 83.61 %
PTR: 22		Total No. of Sec. Schools: 7662
SCR: 37		Total No. of Teachers in all Sec. Schools : 37902

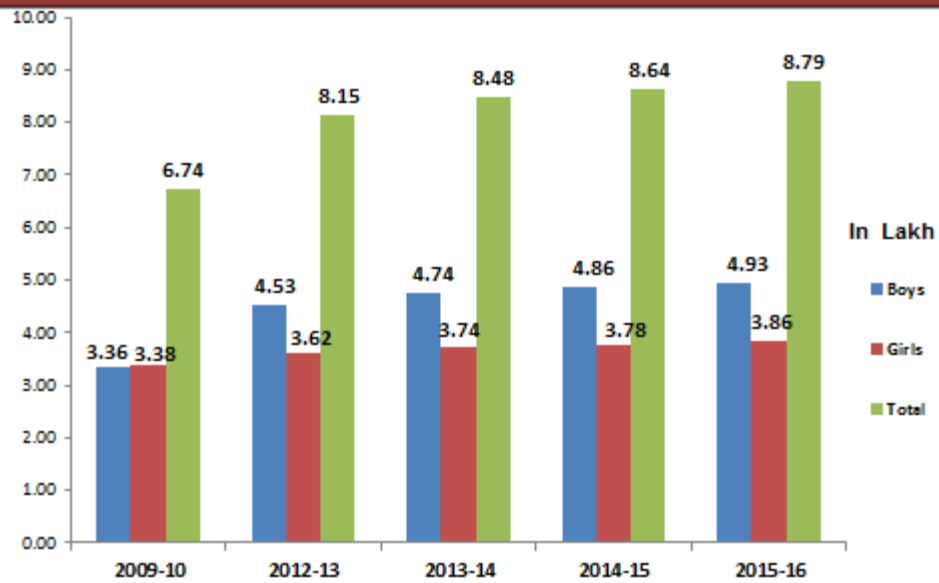
## Secondary Schools by Management



**Total Schools - 7662**

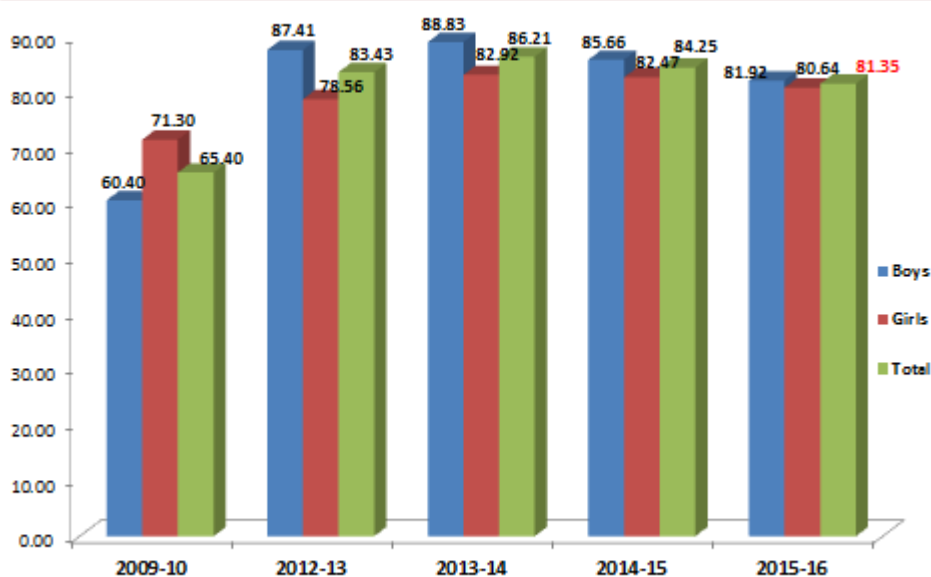
Source: UDISE.

## Enrolment (Secondary level)



Source: 2009-10 SSE & 2012-13 to 2015-16 UDISE.

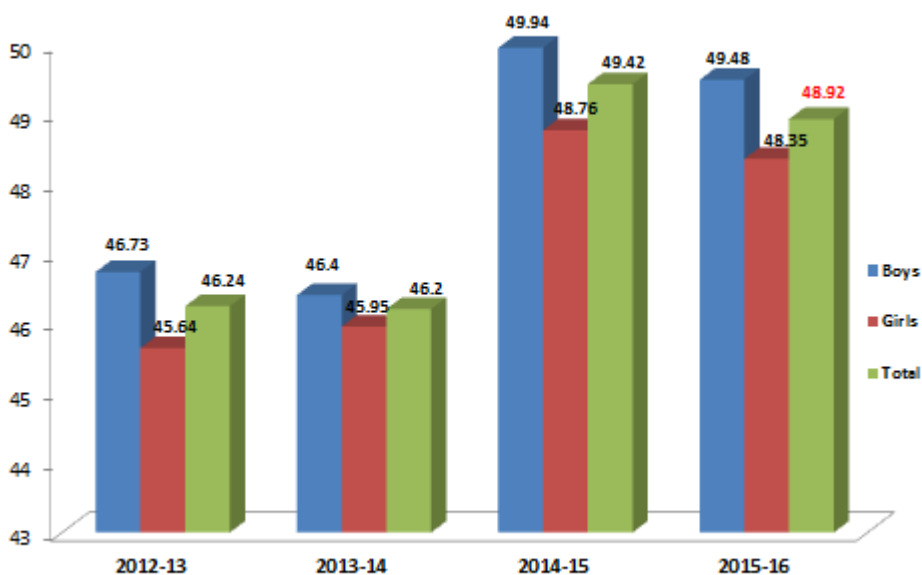
## Gross Enrolment Ratio (Secondary level)



National GER (2014-15) : 78.51%

Source: 2009-10 SSE & 2012-13 to 2015-16 UDISE.

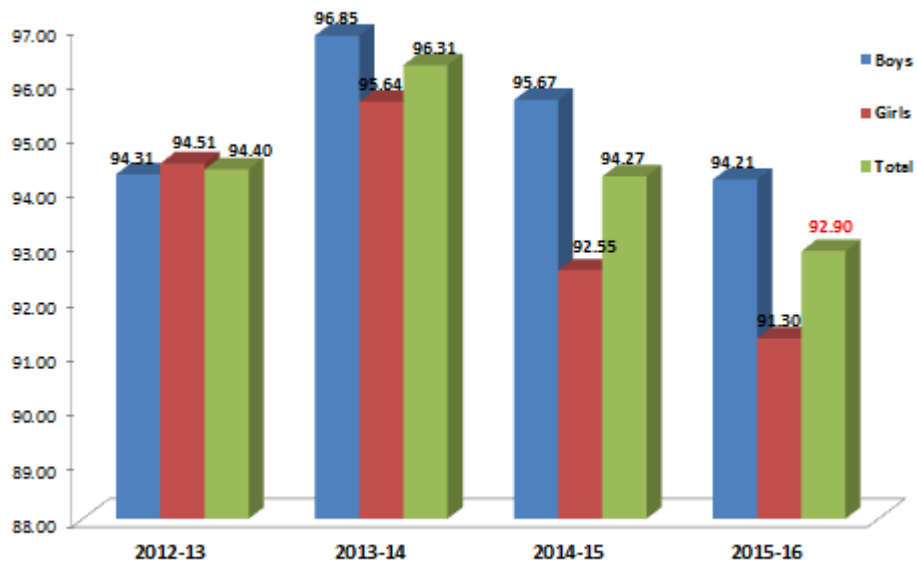
## Net Enrolment Ratio (Secondary level)



National NER (2014-15) : 48.46%

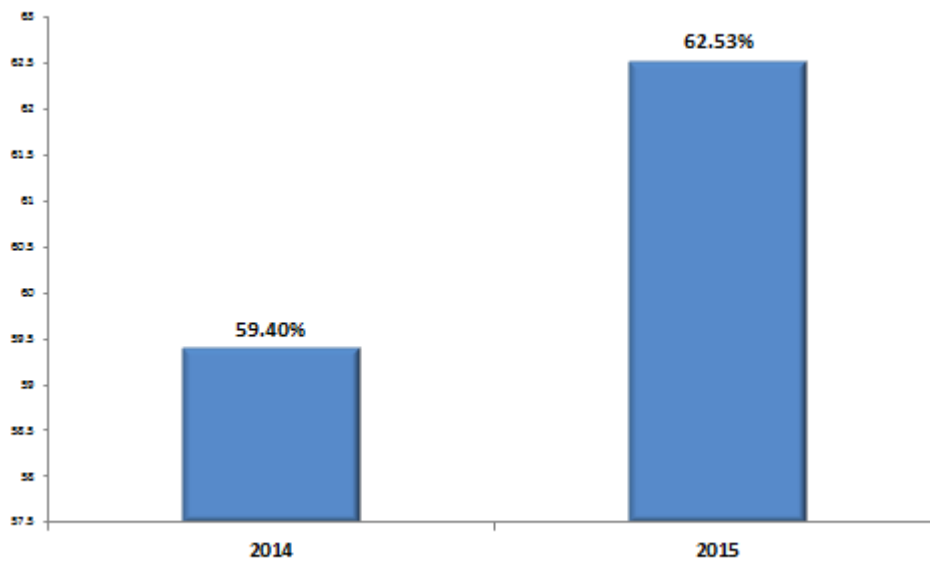
Source: UDISE.

## Transition Rate: (Class VIII to IX)



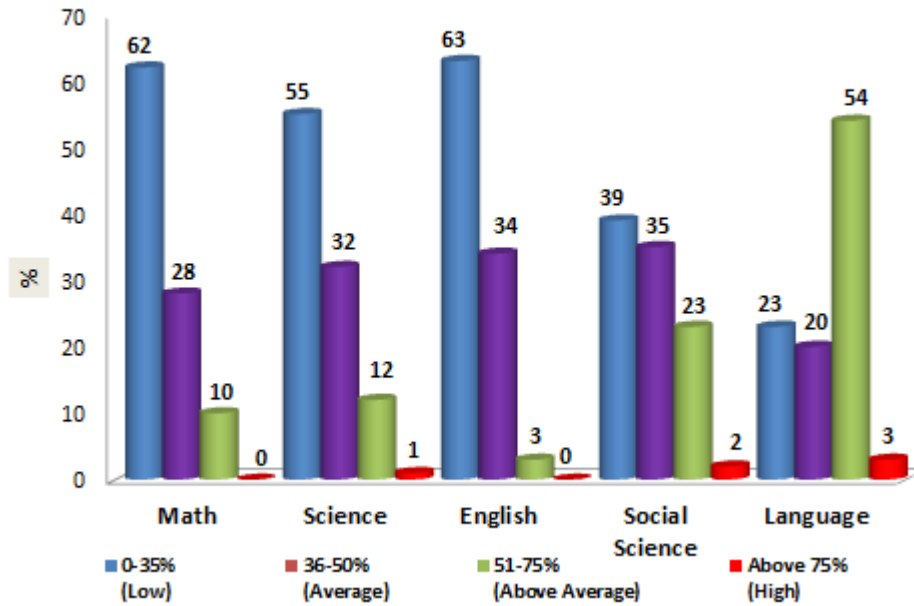
National Transition Rate : 91.58%  
Source: UDISE.

## Pass Percentage Class X

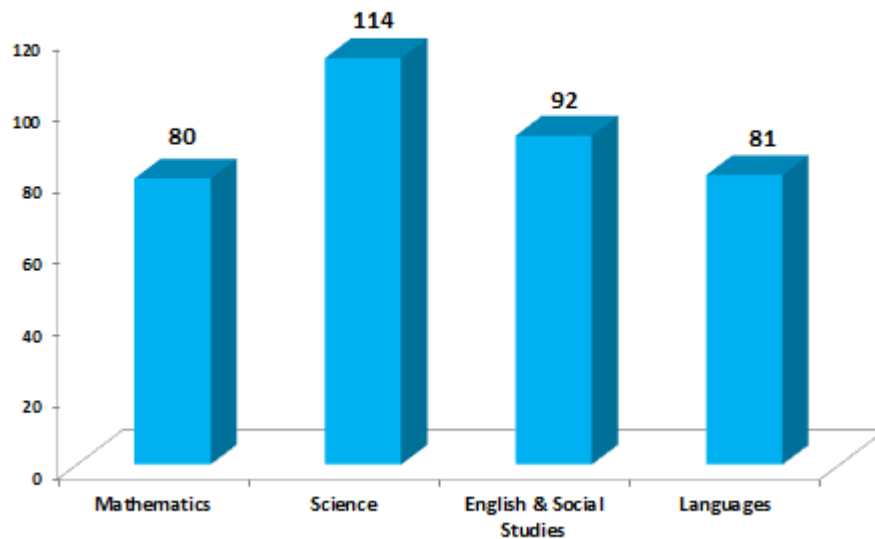


National Pass Percentage : 81.36%  
Source: UDISE.

## National Achievement survey



## Subject Wise PTR (Govt.)



Source: UDISE.

## List of Schools approved for Implementation of ICT in State of Haryana during 2016-17

Sl. No.	District	Block	Village	UDISE Code	School Name
1	Bhiwani	Baund Kalan	Rawaldhi	6130200202	GHS RAWALDHI
2	Bhiwani	Kairu	Kairu	6130701403	GGSSS KAIRU
3	Bhiwani	Siwani	Siwani Khera	6130903404	AMSSS SIWANI KHERA
4	Bhiwani	Tosham	Tosham	6131005120	AMSSS TOSHAM
5	Faridabad	Ballabgarh	Khandawali	6190108102	GSSS KHANDAWALI
6	Fatehabad	Fatehabad	Bangaon	6100101407	AMSSS BANGAON
7	Fatehabad	Bhuna	Dult	6100201503	AMSSS DULT
8	Fatehabad	Bhattu Kalan	Sarwarpur	6100302104	AMSSS SARWARPUR
9	Fatehabad	Ratia	Bahmanwala	6100401201	GSSS BAHMANWALA
10	Fatehabad	Ratia	Ladhuwas	6100407601	GSSS LADHUWAS
11	Fatehabad	Tohana	Kanheri	6100502206	AMSSS KANHERI
12	Gurgaon	Pataudi	Longra	6180203302	GSSS LANGRA
13	Gurgaon	Sohna	Silani	6180305502	GSSS SILANI
14	Hisar	Agroha	Agroha	6120200115	AMSSS AGROHA
15	Hisar	Hisar-Ii	Bhiwani Rohila	6120700707	AMSSS BHIWANI ROHILLA
16	Hisar	Hisar-Ii	Gms No-4	6120705206	GSSS DHANI PEERANWALI
17	Hisar	Narnaund	Kheri Lochab	6120801104	AMSSS KHERI LOHCHAB
18	Jhajjar	Jhajjar	Gijarod	6150101902	GHS GIJARODH
19	Jhajjar	Jhajjar	Kilrodh	6150103702	GHS KILRODH
20	Jhajjar	Matanhail	Dhalanwas	6150601102	GSSS DHALANWAS
21	Jind	Safidon	Ratta Khera	6090303302	GSSS RATTAKHERA
22	Jind	Alewa	Hassanpur	6090501903	AMSSS HASANPUR
23	Jind	Uchana	Ghaso Khurd	6090604102	AMSSS GHASOKHURD
24	Kaithal	Guhla	Seon Majra	6050100902	GSSS SEON MAJRA
25	Kaithal	Guhla	Kharkara	6050104802	GSSS KHARKARA
26	Kaithal	Kaithal	Geong	6050200305	AMSSS GEONG
27	Kaithal	Kalayath	Ramgarh Pandwan	6050300306	AMSSS RAMGARHPANDWA
28	Kaithal	Rajound	Rohera	6050502906	GGSSS ROHERA
29	Kaithal	Rajound	Songri	6050503304	AMSSS SONGRI
30	Karnal	Nissing	Chirao	6060201602	GSSS CHIRAO
31	Karnal	Nissing	Jundla	6060204803	GGSSS JUNDLA
32	Karnal	Indri	Dabkoli Kalan	6060500302	GSSS DABKOLIKALAN
33	Kurukshetra	Pehowa	Bherian	6040201003	GSSS BHERIAN

34	Kurukshetra	Pehowa	Urnaicha	6040207602	GSSS URNAICHA
35	Mahendragarh	Nangal Choudhary	Meghot Hala	6160504302	GSSS MEGHOT HALLA
36	Mewat	Punhana	Mundheta	6200106503	AMSSS MUNDHETA
37	Mewat	F.P.Jhirka	Hasanpur Bilonda	6200202003	AMSSS HASANPUR BILONDA
38	Mewat	Nagina	Mohamadnagar	6200404803	AMSSS MOHD. NAGAR
39	Mewat	Nagina	Ranyala Patakpur	6200404902	GHS RANIYALA PATAKPUR
40	Mewat	Nuh	Nuh	6200508418	GMSSSS NUH
41	Mewat	Nuh	Kawarsika	6200512302	GSSS KAWARSIKA
42	Palwal	Hassanpur	Ramgarh	6210205503	AMSSS RAMGARH
43	Palwal	Palwal	Thanthri	6211004302	GSSS THANTHRI
44	Palwal	Palwal	Palwal-1	6211012317	GHS RAILWAY COLONY PALWAL
45	Panchkula	Pinjore	Panchkula	6010100116	GMSSSS (SARTHAK) SEC-12 A, PKL
46	Panchkula	Raipur Rani	Rehna	6010400702	GSSS REHNA
47	Panipat	Israna	Israna	6070300201	GGSSS ISRANA
48	Panipat	Samalkha	Dindar	6070403102	GSSS DINDAR
49	Panipat	Samalkha	Vajirpur Titana	6070403201	GSSS VAJIRPUR TITANA
50	Panipat	Madlauda	Shodapur	6070503901	GSSS SHODAPUR
51	Panipat	Bapoli	Passina Khurd	6070602902	GSSS PASSINA KHURD
52	Panipat	Bapoli	Chhajpur Kalan	6070600505	AMSSS CHHAJPUR KALAN
53	Panipat	Bapoli	Sanoli Kalan	6070603602	GSSS SANOLI KALAN
54	Rewari	Rewari	Akera	6170500203	GSSS AKERA
55	Rewari	Rewari	Ghatal	6170504102	GSSS GUJAR GHATAL
56	Rohtak	Meham	Kheri Meham	6140301501	GSSS KHERI MEHAM
57	Rohtak	Meham	Kishangarh	6140301602	GSSS KISHAN GARH
58	Rohtak	Meham	Madina Kauran	6140302801	GSSS MADINA
59	Rohtak	Rohtak	Baland	6140400501	GHS BALAND
60	Sirsa	Baragudha	Jhiri(60627)	6110100705	AMSSS JHIRI
61	Sirsa	Dabwali	Kaluana (60519)	6110203607	AMSSS KALUANA
62	Sirsa	Ellenabad	Mithi Sureran	6110303706	AMSSS KHARI SURERAN
63	Sirsa	Nathusari Chopta	Jogiwala(60737)	6110402302	GSSS JOGIWALA
64	Sirsa	Nathusari Chopta	Nathusari Kalan(60726)	6110403905	AMSSS NATHUSARI KALAN

65	Sirsa	Odhan	Jalalana (60592)	6110501207	AMSSS JALALANA
66	Sirsa	Rania	Mohamadpur ia(60776)	6110603905	AMSSS MOHAMADPURIA
67	Sirsa	Sirsa	Ward. No.2 Sirsa	6110705269	GSSS CHATTARGARH PATTI
68	Sonipat	Gohana	Garhi Ujale Khan	6080501102	GSSS GARHI UJALE KHAN
69	Jind	Uchana	Kheri Saffa	6090602204	KGBV KHERI SAFFA
70	Jind	Narwana	Phulian Khurd	6090705605	KGBV PHULLIAN KHURD
71	Mewat	Punhana	Punahana	6200100109	KGBV PUNHANA
72	Mewat	F.P.Jhirka	Ferozepur Jhirka	6200203215	KGBV F.P. JHIRKA
73	Mewat	Nagina	Nagina	6200401604	KGBV NAGINA
74	Mewat	Nuh	Nuh	6200508406	KGBV NUH
75	Mewat	Taoru	Taoru	6200600113	KGBV TAORU
76	Palwal	Hathin	Buraka	6210307702	KGBV BURAKA HATHIN
75	Mahendragarh	Nangal Choudhary	Mandhana	6160504005	AMSSS MANDHANA
78	Palwal	Hodal	Ladiaka	6211702503	AMSSS LADIYAKA
79	Yamunanagar	Bilaspur	Alisher Pur Majra	6030106701	GHS ALISHERPUR MAJRA
80	Panipat	Madlauda	Dariyapur	6070503103	GSSS DARIYAPUR
81	Fatehabad	Bhattu Kalan	Kukranwali	6100301702	GHS KUKRANWALI
82	Sirsa	Ellenabad	Beharwala Khurd(91677 1)	6110300402	GHS BEHARWALA KHURD
83	Sirsa	Ellenabad	Mithanpura(6 0819)	6110303602	GHS MITHANPURA
84	Hisar	Barwala	Dhani Khan Bhadur	6120301602	GHS DHANI KHAN BHADUR
85	Hisar	Barwala	Gabipur	6120302104	AMSSS GABIPUR
86	Bhiwani	Behal	Gokalpura	6130400702	GHS GOKALPURA
87	Mewat	F.P.Jhirka	Bubalheri	6200201402	GHS BUBALHERI



**Annexure-IV**

**List of 500 schools approved for Vocational Education in Haryana during 2016-17**

<b>S. No.</b>	<b>Name of District</b>	<b>Name of Schools</b>	<b>UDISE Code</b>	<b>Vocational Trade 1</b>	<b>Vocational Trade 2</b>
1	Ambala	GSSS Ghel	6020201802	IT/ITeS	Agriculture
2	Ambala	GSSS Bakra Market	6020205525	IT/ITeS	Beauty & Wellness
3	Ambala	GSSS Kanjala	6020506502	IT/ITeS	Phy. Edu. & Sports
4	Ambala	GSSS Ballana	6020101703	IT/ITeS	Retail
5	Ambala	GSSS Shahzadpur	6020603204	IT/ITeS	Phy. Edu. & Sports
6	Ambala	GSSS Majri	6020105602	IT/ITeS	Retail
7	Ambala	GSSS Baknaur	6020108802	IT/ITeS	Retail
8	Ambala	GSSS Naggal	6020107802	IT/ITeS	Retail
9	Ambala	GSSS Bari Bassi	6020601402	IT/ITeS	Agriculture
10	Ambala	GSSS Kesri	6020301203	IT/ITeS	Retail
11	Ambala	GSSS Kathemajra	6020501301	IT/ITeS	Phy. Edu. & Sports
12	Ambala	GSSS Dhanana	6020607901	IT/ITeS	Agriculture
13	Ambala	GSSS Kakkar Majra	6020601101	IT/ITeS	Healthcare PCA
14	Ambala	GSSS Jalbera	6020101103	IT/ITeS	Retail
15	Ambala	GSSS Shahpur	6020102904	IT/ITeS	Retail
16	Ambala	GSSS Dukheri	6020103402	IT/ITeS	Banking & Finance Services
17	Ambala	GSSS Mohri Bhanokheri	6020105303	IT/ITeS	Healthcare VT
18	Ambala	GSSS Saunta	6020112102	IT/ITeS	Apparel-Fashion Designer
19	Ambala	GSSS Ambala City (Baldev Nagar)	6020113002	IT/ITeS	Phy. Edu. & Sports
20	Ambala	GGSS S Ambala City (Model Town)	6020113004	IT/ITeS	Beauty & Wellness
21	Ambala	GGSSS Ambala City (Baldev Nagar)	6020113005	IT/ITeS	Beauty & Wellness
22	Ambala	GSSS Panjokhra	6020200904	IT/ITeS	Agriculture
23	Ambala	GSSS Boh	6020203202	IT/ITeS	Banking & Finance Services

24	Ambala	GSSS Rampur Sarsheri	6020203702	IT/ITeS	Banking & Finance Services
25	Ambala	GSSS Sapera	6020204102	IT/ITeS	Apparel-Fashion Designer
26	Ambala	GSSS Ambala Cantt (Rangia Mandi)	6020205524	IT/ITeS	Banking & Insurance Services
27	Ambala	GSSS Ambala Cantt. (B.C. Bazar)	6020205538	IT/ITeS	Beauty & Wellness
28	Ambala	GSSS Bihta	6020302702	IT/ITeS	Banking & Insurance Services
29	Ambala	GSSS Nahouni	6020304902	IT/ITeS	Healthcare PCA
30	Ambala	GSSS Dheen	6020401003	IT/ITeS	Agriculture
31	Ambala	GSSS Thamber	6020407002	IT/ITeS	Agriculture
32	Ambala	GSSS Laha	6020500902	IT/ITeS	Agriculture
33	Ambala	GSSS Akbarpur	6020503601	IT/ITeS	Healthcare PCA
34	Ambala	GSSS Baragaon	6020504401	IT/ITeS	Tourism & Travel
35	Ambala	GSSS Jeoli	6020507203	IT/ITeS	Banking & Finance Services
36	Ambala	GSSS Shahpur Nurad	6020507502	IT/ITeS	Beauty & Wellness
37	Ambala	GGSSS Naraingarh	6020509703	IT/ITeS	Beauty & Wellness
38	Ambala	GSSS Bhurewala	6020510001	IT/ITeS	Apparel-Fashion Designer
39	Ambala	GSSS Raiwali	6020600101	IT/ITeS	Beauty & Wellness
40	Ambala	GSSS Bharog	6020604101	IT/ITeS	Tourism & Travel
41	Ambala	GSSS Krasan	6020606001	IT/ITeS	Apparel-Fashion Designer
42	Bhiwani	GSSS Mandhana	6130502505	IT/ITeS	Retail
43	Bhiwani	GSSS Jhunpa Khurd	6130902701	IT/ITeS	Healthcare VT
44	Bhiwani	GMSSS Tosham	6131005101	IT/ITeS	Banking & Finance Services
45	Bhiwani	GGSSS Lohari Jattu	6130303203	IT/ITeS	Beauty & Wellness
46	Bhiwani	GSSS Baliali	6130303104	IT/ITeS	Phy. Edu. & Sports
47	Bhiwani	GSSS Ratera	6130301906	IT/ITeS	Banking & Finance Services
48	Bhiwani	GSSS Kakroli Sardara	6130103901	IT/ITeS	Healthcare PCA

49	Bhiwani	GSSS Gujrani	6130502403	IT/ITeS	Retail
50	Bhiwani	GGSSS Chang	6130505804	IT/ITeS	Retail
51	Bhiwani	GSSS Pichopa Kalan	6130107003	IT/ITeS	Retail
52	Bhiwani	GSSS Lehgan	6130701003	IT/ITeS	Healthcare PCA
53	Bhiwani	GGSSS Loharu	6130805904	IT/ITeS	Beauty & Wellness
54	Bhiwani	GSSS Manheru	6130502603	IT/ITeS	Retail
55	Bhiwani	GSSS Dulheri	6131000503	IT/ITeS	Healthcare PCA
56	Bhiwani	GSSS Niganakala	6131004102	IT/ITeS	Healthcare PCA
57	Bhiwani	GSSS Baund Kalan	6130202104	IT/ITeS	Retail
58	Bhiwani	GSSS Bhageshwari	6130203303	IT/ITeS	Beauty & Wellness
59	Bhiwani	GGSSS Baliali	6130303105	IT/ITeS	Beauty & Wellness
60	Bhiwani	GSSS Obra	6130402302	IT/ITeS	Phy. Edu. & Sports
61	Bhiwani	GSSS Mandholi Kalan	6130403303	IT/ITeS	Apparel-Fashion Designer
62	Bhiwani	GGSSS Bapora	6130500103	IT/ITeS	Banking & Finance Services
63	Bhiwani	GSSS Sanga	6130500903	IT/ITeS	Banking & Finance Services
64	Bhiwani	GSSS Nathuwas	6130501602	IT/ITeS	Apparel-Fashion Designer
65	Bhiwani	GSSS Palwas	6130501803	IT/ITeS	Apparel-Fashion Designer
66	Bhiwani	GGSSS Manheru	6130502604	IT/ITeS	Apparel-Fashion Designer
67	Bhiwani	GGSSS Dhanana	6130506608	IT/ITeS	Beauty & Wellness
68	Bhiwani	GSSS Mundhal Khurd	6130507105	IT/ITeS	Apparel-Fashion Designer
69	Bhiwani	GSSS Norangabass Rajputana	6130603402	IT/ITeS	Agriculture
70	Bhiwani	GGSS S Jui Khurd	6130702904	IT/ITeS	Beauty & Wellness
71	Bhiwani	GSSS Singhani	6130806502	IT/ITeS	Agriculture
72	Bhiwani	GSSS Bajina	6131000203	IT/ITeS	Agriculture
73	Bhiwani	GSSS Hassan	6131003202	IT/ITeS	Agriculture
74	Bhiwani	GSSS, Kharkari (loharu)	6130805403	IT/ITeS	Apparel-Fashion Designer
75	Faridabad	GSSS Khandwali	6190108102	IT/ITeS	Phy. Edu. & Sports

76	Faridabad	GSSS Mujesar	6190104504	IT/ITeS	Retail
77	Faridabad	GSSS Ferozepur Kalan	6190111001	IT/ITeS	Phy. Edu. & Sports
78	Faridabad	GSSS Ballabgarh	6190100109	IT/ITeS	Banking & Insurance Services
79	Faridabad	GSSS NIT No. 5	6191610003	IT/ITeS	Banking & Finance Services
80	Faridabad	GSSS Old Faridabad	6191609003	IT/ITeS	Banking & Insurance Services
81	Faridabad	GSSS Jasana	6191603802	IT/ITeS	Retail
82	Faridabad	GGSSS Dayalpur	6190105901	IT/ITeS	Phy. Edu. & Sports
83	Faridabad	GSSS Fatehpur Billoach	6190101004	IT/ITeS	Phy. Edu. & Sports
84	Faridabad	GSSS NIT No. 3	6191609903	IT/ITeS	Banking & Finance Services
85	Faridabad	GGSSS Sihi Sector-8	6190100119	IT/ITeS	Banking & Finance Services
86	Faridabad	GSSS Fatehpur Tagga	6190106802	IT/ITeS	Healthcare PCA
87	Faridabad	GSSS Naryala	6190107102	IT/ITeS	Retail
88	Faridabad	GSSS Chandawali	6190109706	IT/ITeS	Healthcare PCA
89	Faridabad	GSSS Ankhir	6191600802	IT/ITeS	Healthcare VT
90	Faridabad	GSSS Bhupani	6191602002	IT/ITeS	Phy. Edu. & Sports
91	Faridabad	GSSS Kheri Kalan	6191604304	IT/ITeS	Agriculture
92	Faridabad	GSSS Tilpat	6191608303	IT/ITeS	Agriculture
93	Fatehabad	GSSS Daryapur	6100102402	IT/ITeS	Agriculture
94	Fatehabad	GSSS Jakhal Mandi	6100700104	IT/ITeS	Phy. Edu. & Sports
95	Fatehabad	GGSS S Mohamadpur Rohi	6100105001	IT/ITeS	Healthcare PCA
96	Fatehabad	GSSS Bangaon	6100101403	IT/ITeS	Agriculture
97	Fatehabad	GSSS Buwan	6100200603	IT/ITeS	Healthcare PCA
98	Fatehabad	GSSS Bighar	6100102001	IT/ITeS	Phy. Edu. & Sports
99	Fatehabad	GSSS Dhand	6100301004	IT/ITeS	Agriculture
100	Fatehabad	GSSS Shekhupur Daroli	6100302202	IT/ITeS	Agriculture
101	Fatehabad	GSSS Aharwan	6100400103	IT/ITeS	Beauty & Wellness
102	Fatehabad	GSSS Hassanga	6100402801	IT/ITeS	Agriculture

103	Fatehabad	GSSS Mohamdpur Sotter	6100404701	IT/ITeS	Agriculture
104	Fatehabad	GSSS Akanwali	6100500102	IT/ITeS	Healthcare PCA
105	Fatehabad	GSSS Dharsul Kalan	6100501102	IT/ITeS	Banking & Insurance Services
106	Fatehabad	GSSS Laloda	6100502401	IT/ITeS	Agriculture
107	Fatehabad	GSSS Nanheri	6100503201	IT/ITeS	Beauty & Wellness
108	Fatehabad	GSSS Samain	6100503904	IT/ITeS	Beauty & Wellness
109	Fatehabad	GSSS Gajuwala	6100504803	IT/ITeS	Banking & Insurance Services
110	Fatehabad	GSSS Parta	6100505103	IT/ITeS	Agriculture
111	Fatehabad	GGSSS Jakhal Mandi	6100700107	IT/ITeS	Beauty & Wellness
112	Fatehabad	GSSS Chandpura	6100701202	IT/ITeS	Media-Entertainment/Animation
113	Fatehabad	GSSS Karandi	6100702401	IT/ITeS	Agriculture
114	Gurgaon	GSSS Bhangrola	6180405403	IT/ITeS	Healthcare PCA
115	Gurgaon	GGSSS Badshahpur	6180301104	IT/ITeS	Beauty & Wellness
116	Gurgaon	GSSS Dundahera	6180103501	IT/ITeS	Healthcare PCA
117	Gurgaon	GSSS Kasan	6180108108	IT/ITeS	Retail
118	Gurgaon	GSSS Kherla	6180301801	IT/ITeS	Healthcare PCA
119	Gurgaon	GSSS KherkiDaula	6180109503	IT/ITeS	Banking & Finance Services
120	Gurgaon	GSSS Siwari	6180403602	IT/ITeS	Phy. Edu. & Sports
121	Gurgaon	GSSS Bhondsi	6180302101	IT/ITeS	Banking & Finance Services
122	Gurgaon	GSSS GawalPahari	6180104803	IT/ITeS	Banking & Finance Services
123	Gurgaon	GSSS Khandsa	6180108501	IT/ITeS	Banking & Finance Services
124	Gurgaon	GSSS Nathupur	6180105602	IT/ITeS	Phy. Edu. & Sports
125	Gurgaon	GSSS Wazirabad	6180106504	IT/ITeS	Phy. Edu. & Sports
126	Gurgaon	GSSS Jharsa	6180105803	IT/ITeS	Agriculture
127	Gurgaon	GGSSS Manesar	6180108003	IT/ITeS	Banking & Finance Services

128	Gurgaon	GSSS Mohdpur Jharsa	6180108802	IT/ITeS	Agriculture
129	Gurgaon	GSSS Garhi Harsaru	6180110503	IT/ITeS	Retail
130	Gurgaon	GSSS Teekli	6180300403	IT/ITeS	Tourism & Travel
131	Gurgaon	GSSS Farrukh Nagar	6180400104	IT/ITeS	Banking & Finance Services
132	Gurgaon	GGSSS Farrukh Nagar	6180400116	IT/ITeS	Beauty & Wellness
133	Gurgaon	GGSSS Gurgaon Village	6180102003	IT/ITeS	Banking & Finance Services
134	Hisar	GGSSS Agroha	6120200104	IT/ITeS	Healthcare PCA
135	Hisar	GGSSS Pabra	6120901404	IT/ITeS	Phy. Edu. & Sports
136	Hisar	GSSS Barwala	6120300502	IT/ITeS	Healthcare PCA
137	Hisar	GSSS Daulatpur	6120900603	IT/ITeS	Healthcare PCA
138	Hisar	GSSS Litani	6120902103	IT/ITeS	Phy. Edu. & Sports
139	Hisar	GSSS Lohari Ragho	6120801702	IT/ITeS	Retail
140	Hisar	GSSS Modakhera	6120102603	IT/ITeS	Healthcare PCA
141	Hisar	GSSS Pabra	6120901403	IT/ITeS	Security
142	Hisar	GSSS Sadalpur	6120103003	IT/ITeS	Healthcare PCA
143	Hisar	GSSS Koth Kalan	6120801506	IT/ITeS	Security
144	Hisar	GSSS Bhaini Amirpur	6120800204	IT/ITeS	Healthcare PCA
145	Hisar	GSSS Ugalan	6120502103	IT/ITeS	Phy. Edu. & Sports
146	Hisar	GSSS Kohli	6120102204	IT/ITeS	Healthcare PCA
147	Hisar	GSSS Byana Khera	6120300803	IT/ITeS	Healthcare PCA
148	Hisar	GSSS Juglan	6120302603	IT/ITeS	Phy. Edu. & Sports
149	Hisar	GSSS Kharak Punia	6120303003	IT/ITeS	Retail
150	Hisar	GSSS Jamawari	6120403402	IT/ITeS	Phy. Edu. & Sports
151	Hisar	GSSS Masudpur	6120404502	IT/ITeS	Healthcare PCA
152	Hisar	GSSS Puthi Mangal Khan	6120404802	IT/ITeS	Phy. Edu. & Sports
153	Hisar	GGSSS Kaimri	6120602504	IT/ITeS	Healthcare PCA
154	Hisar	GSSS Talwandi Rukka	6120604906	IT/ITeS	Media-Entertainment/Animation
155	Hisar	GSSS Arya Nagar	6120700103	IT/ITeS	Agriculture
156	Hisar	GSSS Kirtan	6120702603	IT/ITeS	Retail

157	Hisar	GSSS Neoli Kalan	6120703304	IT/ITeS	Healthcare PCA
158	Hisar	GGSSS Narnaund	6120802408	IT/ITeS	Beauty & Wellness
159	Jhajjar	GGSSS Bahu Jholri	6150600403	IT/ITeS	Beauty & Wellness
160	Jhajjar	GSSS Mehrana	6150104503	IT/ITeS	Retail
161	Jhajjar	GSSS Chhuchhakwas	6150600802	IT/ITeS	Retail
162	Jhajjar	GSSS Koelpur Khetawas	6150602802	IT/ITeS	Healthcare PCA
163	Jhajjar	GSSS Hassanpur	6150102202	IT/ITeS	Healthcare PCA
164	Jhajjar	GSSS Pelpa	6150105002	IT/ITeS	Phy. Edu. & Sports
165	Jhajjar	GSSS Dawla	6150101502	IT/ITeS	Retail
166	Jhajjar	GSSS Tumbaheri	6150403602	IT/ITeS	Phy. Edu. & Sports
167	Jhajjar	GSSS Ladrawan	6150203603	IT/ITeS	Phy. Edu. & Sports
168	Jhajjar	GGSSS Mandouthi	6150204506	IT/ITeS	Beauty & Wellness
169	Jhajjar	GSSS Lohari	6150104303	IT/ITeS	Apparel-Fashion Designer
170	Jhajjar	GGSSS Beri (Jhajjar)	6150503805	IT/ITeS	Beauty & Wellness
171	Jind	GSSS Retauli (Pilukhera)	6090403002	IT/ITeS	Healthcare PCA
172	Jind	GGSSS Singhana	6090307304	IT/ITeS	Apparel-Fashion Designer
173	Jind	GSSS Pegan	6090503905	IT/ITeS	Security
174	Jind	GSSS Neguran	6090503803	IT/ITeS	Security
175	Jind	GSSS Ghimana	6090101203	IT/ITeS	Agriculture
176	Jind	GGSSS Dhamtan Sahib	6090701603	IT/ITeS	Apparel-Fashion Designer
177	Jind	GSSS Kinana	6090202903	IT/ITeS	Apparel-Fashion Designer
178	Jind	GSSS Ikkas	6090101703	IT/ITeS	Beauty & Wellness
179	Jind	GSSS Jind (Defence Colony)	6090102313	IT/ITeS	Tourism & Travel
180	Jind	GSSS Rajpura	6090104102	IT/ITeS	Beauty & Wellness
181	Jind	GSSS Jajwan	6090105702	IT/ITeS	Tourism & Travel
182	Jind	GSSS Roopgarh Jeetgarh	6090107503	IT/ITeS	Beauty & Wellness

183	Jind	GSSS Nand Garh	6090203803	IT/ITeS	Healthcare PCA
184	Jind	GSSS Bushlana	6090300802	IT/ITeS	Healthcare PCA
185	Jind	GSSS Kharkhana	6090302002	IT/ITeS	Agriculture
186	Jind	GSSS Malar	6090306402	IT/ITeS	Beauty & Wellness
187	Jind	GGSSS Alewa	6090500307	IT/ITeS	Beauty & Wellness
188	Jind	GGSSS Naguran	6090503804	IT/ITeS	Beauty & Wellness
189	Jind	GSSS Shamdo	6090504502	IT/ITeS	Healthcare PCA
190	Jind	GGSSS Chattar	6090600705	IT/ITeS	Healthcare VT
191	Jind	GSSS Durjanpur	6090601002	IT/ITeS	Banking & Finance Services
192	Jind	GMSSSS Balerkha	6090700604	IT/ITeS	Banking & Insurance Services
193	Jind	GSSS Danoda	6090701103	IT/ITeS	Tourism & Travel
194	Jind	GSSS Dhanauri	6090701803	IT/ITeS	Banking & Insurance Services
195	Jind	GGSSS Kalwan	6090703903	IT/ITeS	Beauty & Wellness
196	Jind	GSSS Singowal	6090706302	IT/ITeS	Beauty & Wellness
197	Jind	AMSSS Ghaso Khurd	6090604102	IT/ITeS	Phy. Edu. & Sports
198	Kaithal	GSSS Sanghan	6050207904	IT/ITeS	Apparel-Fashion Designer
199	Kaithal	GMSSS Keorak	6050202402	IT/ITeS	Banking & Finance Services
200	Kaithal	GSSS Chandana	6050203402	IT/ITeS	Phy. Edu. & Sports
201	Kaithal	GSSS Kailram	6050301803	IT/ITeS	Phy. Edu. & Sports
202	Kaithal	GSSS Bhunsla	6050106702	IT/ITeS	Agriculture
203	Kaithal	GSSS Serhada	6050500903	IT/ITeS	Retail
204	Kaithal	GSSS Bhuna	6050105105	IT/ITeS	Phy. Edu. & Sports
205	Kaithal	GSSS Seemla	6050300403	IT/ITeS	Apparel-Fashion Designer
206	Kaithal	GGSSS Jakholi	6050501303	IT/ITeS	Apparel-Fashion Designer
207	Kaithal	GSSS Peedal	6050105002	IT/ITeS	Healthcare PCA



208	Kaithal	GSSS Daba	6050105402	IT/ITeS	Beauty & Wellness
209	Kaithal	GSSS Geong	6050200302	IT/ITeS	Healthcare PCA
210	Kaithal	GSSS Narar	6050200802	IT/ITeS	Phy. Edu. & Sports
211	Kaithal	GSSS Peoda	6050201602	IT/ITeS	Banking & Insurance Services
212	Kaithal	GSSS Padla	6050201902	IT/ITeS	Retail
213	Kaithal	GSSS Diwal	6050203002	IT/ITeS	Banking & Finance Services
214	Kaithal	GSSS Khurana	6050203803	IT/ITeS	Beauty & Wellness
215	Kaithal	GSSS Baba Ladana	6050204902	IT/ITeS	Healthcare VT
216	Kaithal	GSSS Nawch	6050207303	IT/ITeS	Phy. Edu. & Sports
217	Kaithal	GSSS Sisle-Sismore	6050208202	IT/ITeS	Healthcare VT
218	Kaithal	GSSS Kamalpur	6050303002	IT/ITeS	Retail
219	Kaithal	GGSSS Pharal	6050402304	IT/ITeS	Beauty & Wellness
220	Kaithal	GSSS Habri	6050403304	IT/ITeS	Banking & Finance Services
221	Kaithal	GSSS Deeg	6050403702	IT/ITeS	Healthcare PCA
222	Kaithal	GSSS Bakal	6050406702	IT/ITeS	Beauty & Wellness
223	Kaithal	GSSS Kithana	6050503006	IT/ITeS	Banking & Insurance Services
224	Kaithal	GSSS Kasour	6050602002	IT/ITeS	Agriculture
225	Kaithal	GSSS Kheri Gulam Ali	6050602402	IT/ITeS	Banking & Insurance Services
226	Karnal	GGSSS Assandh	6060605701	IT/ITeS	Healthcare PCA
227	Karnal	GSSS Uncha Samana	6060414101	IT/ITeS	Agriculture
228	Karnal	GSSS Dadupur Roran	6060202102	IT/ITeS	Healthcare PCA
229	Karnal	GSSS Jalmana	6060602401	IT/ITeS	Healthcare PCA
230	Karnal	GSSS Agondh	6060200704	IT/ITeS	Phy. Edu. & Sports
231	Karnal	GSSS Padhana	6060300201	IT/ITeS	Healthcare PCA
232	Karnal	GSSS Assandh	6060605702	IT/ITeS	Healthcare PCA
233	Karnal	GSSS Sagga	6060309801	IT/ITeS	Healthcare PCA
234	Karnal	GSSS Munak	6060104803	IT/ITeS	Healthcare PCA

235	Karnal	GSSS Nagla Roran	6060503102	IT/ITeS	Healthcare PCA
236	Karnal	GSSS Gheer	6060414501	IT/ITeS	Agriculture
237	Karnal	GSSS Rahra	6060604501	IT/ITeS	Security
238	Karnal	GSSS Salwan	6060605002	IT/ITeS	Healthcare PCA
239	Karnal	GGSSS Gonder	6060203804	IT/ITeS	Phy. Edu. & Sports
240	Karnal	GSSS Kachhwa	6060414601	IT/ITeS	Security
241	Karnal	GSSS Garhi Jattan	6060501801	IT/ITeS	Healthcare PCA
242	Karnal	GSSS Kheri Naru	6060204203	IT/ITeS	Beauty & Wellness
243	Karnal	GSSS Phaphrana	6060604301	IT/ITeS	Phy. Edu. & Sports
244	Karnal	GSSS Taraori	6060310501	IT/ITeS	Tourism & Travel
245	Karnal	GSSS Daha	6060402302	IT/ITeS	Tourism & Travel
246	Karnal	GSSS Kaimla	6060103302	IT/ITeS	Healthcare VT
247	Karnal	GSSS Manjura	6060202802	IT/ITeS	Phy. Edu. & Sports
248	Karnal	GSSS Bastli	6060205602	IT/ITeS	Security
249	Karnal	GSSS Brass	6060205702	IT/ITeS	Apparel-Fashion Designer
250	Karnal	GSSS Shamgarh	6060300101	IT/ITeS	Banking & Finance Services
251	Karnal	GSSS Mohri Jagir	6060305401	IT/ITeS	Banking & Finance Services
252	Karnal	GSSS Raison	6060311201	IT/ITeS	Banking & Finance Services
253	Karnal	GSSS Darar	6060412601	IT/ITeS	Healthcare PCA
254	Karnal	GSSS Karnal (Model Town)	6060415001	IT/ITeS	Healthcare PCA
255	Karnal	GSSS Pundrak	6060415201	IT/ITeS	Beauty & Wellness
256	Karnal	GSSS Khanpur	6060501002	IT/ITeS	Banking & Finance Services
257	Karnal	GSSS Indri	6060501503	IT/ITeS	Tourism & Travel
258	Karnal	GSSS Kalri Jagir	6060508201	IT/ITeS	Tourism & Travel
259	Karnal	GSSS Kalsora	6060510102	IT/ITeS	Security
260	Karnal	GSSS Bahri	6060600401	IT/ITeS	Healthcare PCA
261	Karnal	GGSS S Ballah	6060600503	IT/ITeS	Beauty & Wellness
262	Karnal	GGSSS Salwan	6060605001	IT/ITeS	Healthcare PCA
263	Karnal	GSSS Uplana	6060605501	IT/ITeS	Banking & Finance Services

264	Kurukshetra	GGSSS Ladwa	6040502006	IT/ITeS	Beauty & Wellness
265	Kurukshetra	GSSS Prahladpur	6040505002	IT/ITeS	Retail
266	Kurukshetra	GSSS Gudha	6040500503	IT/ITeS	Apparel-Fashion Designer
267	Kurukshetra	GMSSSS Ismailabad	6040103303	IT/ITeS	Banking & Finance Services
268	Kurukshetra	GSSS Ismailabad	6040103304	IT/ITeS	Banking & Finance Services
269	Kurukshetra	GSSS Kalsana	6040104603	IT/ITeS	Beauty & Wellness
270	Kurukshetra	GSSS Sambhalkhi	6040107502	IT/ITeS	Agriculture
271	Kurukshetra	GSSS Thol	6040108403	IT/ITeS	Agriculture
272	Kurukshetra	GSSS Haripur	6040110602	IT/ITeS	Apparel-Fashion Designer
273	Kurukshetra	GSSS Bakhli	6040200404	IT/ITeS	Tourism & Travel
274	Kurukshetra	GSSS Bodhni	6040200902	IT/ITeS	Agriculture
275	Kurukshetra	GSSS Kalsa	6040203705	IT/ITeS	Phy. Edu. & Sports
276	Kurukshetra	GSSS Murtzapur	6040204305	IT/ITeS	Healthcare PCA
277	Kurukshetra	GSSS Pehowa	6040205112	IT/ITeS	Security
278	Kurukshetra	GSSS Sandholi	6040206004	IT/ITeS	Tourism & Travel
279	Kurukshetra	GSSS Thaska Miranji	6040207206	IT/ITeS	Banking & Insurance Services
280	Kurukshetra	GSSS Harigarh Bhorakh	6040207803	IT/ITeS	Agriculture
281	Kurukshetra	GSSS Ajrana Kalan	6040300204	IT/ITeS	Banking & Insurance Services
282	Kurukshetra	GSSS Beholi	6040301702	IT/ITeS	Apparel-Fashion Designer
283	Kurukshetra	GSSS Mirzapur	6040307703	IT/ITeS	Banking & Insurance Services
284	Kurukshetra	GSSS Babain	6040400702	IT/ITeS	Banking & Finance Services
285	Kurukshetra	GSSS Mangoli Jattan	6040403002	IT/ITeS	Banking & Insurance Services
286	Kurukshetra	GSSS Ladwa	6040502003	IT/ITeS	Banking & Finance Services
287	Kurukshetra	GSSS Lohara	6040503802	IT/ITeS	Phy. Edu. & Sports

288	Kurukshetra	GSSS Khairi	6040508701	IT/ITeS	Tourism & Travel
289	Mahendergarh	GSSS Ateli	6160100310	IT/ITeS	Banking & Insurance Services
290	Mahendergarh	GSSS Kheri Talwana	6160702905	IT/ITeS	Healthcare PCA
291	Mahendergarh	GSSS Koriawas	6160404601	IT/ITeS	Phy. Edu. & Sports
292	Mahendergarh	GSSS Pali	6160309004	IT/ITeS	Healthcare PCA
293	Mahendergarh	GSSS Sundrah	6160703802	IT/ITeS	Apparel-Fashion Designer
294	Mahendergarh	GSSS Satnali	6160310107	IT/ITeS	Healthcare PCA
295	Mahendergarh	GSSS Kanina	6160702004	IT/ITeS	Healthcare PCA
296	Mahendergarh	GSSS Budhwal	6160501502	IT/ITeS	Phy. Edu. & Sports
297	Mahendergarh	GSSS Malra Bass	6160307402	IT/ITeS	Beauty & Wellness
298	Mahendergarh	GSSS Sihma	6160106304	IT/ITeS	Banking & Finance Services
299	Mahendergarh	GSSS Khudana	6160306202	IT/ITeS	Banking & Finance Services
300	Mahendergarh	GSSS Kothal Kalan	6160306301	IT/ITeS	Healthcare PCA
301	Mahendergarh	GSSS Nangal Chaudhary	6160505103	IT/ITeS	Security
302	Mahendergarh	GSSS Niyamatpur	6160506005	IT/ITeS	Beauty & Wellness
303	Mahendergarh	GSSS Pota	6160703102	IT/ITeS	Healthcare VT
304	Mahendergarh	GSSS Dhanunda	6160704108	IT/ITeS	Healthcare PCA
305	Mahendergarh	GSSS Buchawas	6160705301	IT/ITeS	Beauty & Wellness
306	Mewat	GSSS Ghasera	6200501603	IT/ITeS	Healthcare PCA
307	Mewat	GSSS F.P. Namak	6200501503	IT/ITeS	Healthcare PCA
308	Mewat	GSSS Hassanpur Tauru	6200600301	IT/ITeS	Security
309	Mewat	GSSS Kanwarsika	6200512302	IT/ITeS	Healthcare PCA
310	Mewat	GGSSS Ujina Nuh	6200505604	IT/ITeS	Beauty & Wellness
311	Mewat	GSSS Adbar	6200504702	IT/ITeS	Healthcare PCA
312	Mewat	GSSS Jaurasi	6200600201	IT/ITeS	Tourism & Travel
313	Mewat	GSSS Khor Basai	6200502802	IT/ITeS	Healthcare PCA
314	Mewat	GSSS Kalwari	6200600601	IT/ITeS	Agriculture
315	Mewat	GGSSS Nagina	6200401602	IT/ITeS	Healthcare PCA

316	Mewat	GSSS Atta Barota	6200500302	IT/ITeS	Banking & Insurance Services
317	Mewat	GSSS Jehtana	6200104503	IT/ITeS	Phy. Edu. & Sports
318	Mewat	GGSSS Nuh	6200508403	IT/ITeS	Healthcare PCA
319	Mewat	GGSSS Pinangwah	6200106103	IT/ITeS	Healthcare PCA
320	Mewat	GSSS Bazidpur	6200400502	IT/ITeS	Phy. Edu. & Sports
321	Mewat	GSSS Hathangaon	6200105602	IT/ITeS	Phy. Edu. & Sports
322	Mewat	GSSS Indri	6200500502	IT/ITeS	Security
323	Palwal	GSSS Kushak	6210203905	IT/ITeS	Healthcare PCA
324	Palwal	GSSS Pingode	6210204201	IT/ITeS	Healthcare PCA
325	Palwal	GGSSS Alawalpur	6211012103	IT/ITeS	Apparel-Fashion Designer
326	Palwal	GSSS Chan Dhat	6211002703	IT/ITeS	Retail
327	Palwal	GSSS Teekri Brahman	6211010002	IT/ITeS	Banking & Insurance Services
328	Palwal	GGSSS Aurangabad	6211700205	IT/ITeS	Beauty & Wellness
329	Palwal	GSSS Aurangabad	6211700204	IT/ITeS	Agriculture
330	Palwal	GGSSS Banchari	6211700804	IT/ITeS	Healthcare PCA
331	Palwal	GSSS Deeghot	6211701204	IT/ITeS	Tourism & Travel
332	Palwal	GSSS Rasulpur	6211010603	IT/ITeS	Healthcare PCA
333	Palwal	GSSS Thanthri	6211004302	IT/ITeS	Security
334	Palwal	GSSS Amarpur	6211004502	IT/ITeS	Retail
335	Palwal	GSSS Allika	6211011203	IT/ITeS	Beauty & Wellness
336	Palwal	GSSS Alawalpur	6211012104	IT/ITeS	Retail
337	Palwal	GSSS Bagpur	6211002302	IT/ITeS	Healthcare PCA
338	Palwal	GSSS Solra	6211002402	IT/ITeS	Security
339	Palwal	GSSS Chhainsa	6210300801	IT/ITeS	Healthcare PCA
340	Palwal	GSSS Banchari (Boys)	6211700803	IT/ITeS	Phy. Edu. & Sports
341	Palwal	GSSS Bahin	6210300104	IT/ITeS	Phy. Edu. & Sports
342	Palwal	GGSS S Bhiduki	6211700604	IT/ITeS	Healthcare PCA
343	Palwal	GSSS Hodal	6211705008	IT/ITeS	Phy. Edu. & Sports
344	Panchkula	GSSS Sector-19, Panchkula	6010100108	IT/ITeS	Phy. Edu. & Sports

345	Panchkula	GSSS khatauli	6010203702	IT/ITeS	Phy. Edu. & Sports
346	Panchkula	GSSS Baldwala	6010323901	IT/ITeS	Phy. Edu. & Sports
347	Panchkula	GSSS Mallah	6010101801	IT/ITeS	Healthcare PCA
348	Panchkula	GSSS Barwala	6010204701	IT/ITeS	Agriculture
349	Panchkula	GSSS Rampur Thadeon	6010400201	IT/ITeS	Agriculture
350	Panchkula	GSSS Hangola	6010402202	IT/ITeS	Banking & Finance Services
351	Panipat	GSSS Alupur Nain	6070500901	IT/ITeS	Healthcare PCA
352	Panipat	GSSS Garhi Basic	6070600904	IT/ITeS	Phy. Edu. & Sports
353	Panipat	GSSS Dahar	6070302901	IT/ITeS	Healthcare PCA
354	Panipat	GGSSS Naraina	6070403002	IT/ITeS	Healthcare PCA
355	Panipat	GSSS Sanoli Khurd	6070603702	IT/ITeS	Phy. Edu. & Sports
356	Panipat	GSSS Goela Khurd	6070601203	IT/ITeS	Healthcare PCA
357	Panipat	GGSSS Beholi	6070402603	IT/ITeS	Healthcare PCA
358	Panipat	GGSSS Raksera	6070400904	IT/ITeS	Healthcare PCA
359	Panipat	GSSS Kiwana	6070400201	IT/ITeS	Healthcare PCA
360	Panipat	GSSS Nara	6070502701	IT/ITeS	Agriculture
361	Panipat	GSSS Raksera	6070400901	IT/ITeS	Agriculture
362	Panipat	GSSS Nohra	6070501901	IT/ITeS	Healthcare PCA
363	Panipat	GSSS Rair Kalan	6070502301	IT/ITeS	Banking & Insurance Services
364	Panipat	GSSS Adyana	6070501101	IT/ITeS	Healthcare PCA
365	Panipat	GSSS Dadhola	6070600703	IT/ITeS	Healthcare PCA
366	Panipat	GSSS Ugrakheri	6070101201	IT/ITeS	Banking & Finance Services
367	Panipat	GSSS Barauli	6070103902	IT/ITeS	Healthcare VT
368	Panipat	GSSS Dadlana	6070107202	IT/ITeS	Healthcare PCA
369	Panipat	GSSS Madlauda	6070500102	IT/ITeS	Phy. Edu. & Sports
370	Panipat	GSSS Kawi	6070500301	IT/ITeS	Beauty & Wellness
371	Panipat	GGSS S Bapoli	6070600304	IT/ITeS	Apparel-Fashion Designer
372	Panipat	GSSS Jalalpur	6070601303	IT/ITeS	Beauty & Wellness
373	Panipat	GSSS Ujha	6070604202	IT/ITeS	Healthcare PCA
374	Rewari	GSSS Bharawas	6170501202	IT/ITeS	Healthcare PCA

375	Rewari	GSSS Saharanwas	6170510905	IT/ITeS	Retail
376	Rewari	GSSS Masani	6170509002	IT/ITeS	Healthcare PCA
377	Rewari	GSSS Bithwana	6170501902	IT/ITeS	Healthcare PCA
378	Rewari	GSSS Kakoria	6170506102	IT/ITeS	Phy. Edu. & Sports
379	Rewari	GSSS Sulkha	6170109402	IT/ITeS	Healthcare PCA
380	Rewari	GSSS Kapriwas	6170506605	IT/ITeS	Security
381	Rewari	GSSS Shahbajpur	6170510102	IT/ITeS	Beauty & Wellness
382	Rewari	GSSS Garhi Bolni	6170101804	IT/ITeS	Phy. Edu. & Sports
383	Rewari	GSSS Siha	6170306103	IT/ITeS	Agriculture
384	Rewari	GSSS Berli Khurd	6170200702	IT/ITeS	Phy. Edu. & Sports
385	Rewari	GSSS Mandola	6170304204	IT/ITeS	Beauty & Wellness
386	Rewari	GSSS Nehrugarh	6170404002	IT/ITeS	Healthcare PCA
387	Rewari	GSSS Mohanpur	6170106202	IT/ITeS	Healthcare PCA
388	Rewari	GGSSS Kosli	6170402904	IT/ITeS	Beauty & Wellness
389	Rewari	GSSS Nangal Teju	6170106502	IT/ITeS	Banking & Finance Services
390	Rewari	GSSS Nangal Shahbazpur	6170106402	IT/ITeS	Healthcare VT
391	Rewari	GSSS Dehlawas Gulab Pura	6170201602	IT/ITeS	Healthcare VT
392	Rewari	GSSS Khori	6170303403	IT/ITeS	Banking & Finance Services
393	Rewari	GSSS Majra mutsil Bhalkhi	6170304503	IT/ITeS	Beauty & Wellness
394	Rewari	GSSS Pitharawas	6170305402	IT/ITeS	Healthcare PCA
395	Rewari	GSSS Jharodha	6170402002	IT/ITeS	Healthcare VT
396	Rewari	GSSS Bikaner	6170501803	IT/ITeS	Banking & Finance Services
397	Rewari	GSSS Hansaka	6170504702	IT/ITeS	Phy. Edu. & Sports
398	Rohtak	GSSS Nigana	6140101901	IT/ITeS	Retail
399	Rohtak	GSSS Lahli	6140101601	IT/ITeS	Healthcare PCA
400	Rohtak	GGSSS Kharinti	6140200704	IT/ITeS	Beauty & Wellness
401	Rohtak	GSSS Farmana	6140301001	IT/ITeS	Phy. Edu. & Sports
402	Rohtak	GGSSS Saiman	6140302301	IT/ITeS	Phy. Edu. & Sports

403	Rohtak	GGSSS Farmana	6140301002	IT/ITeS	Beauty & Wellness
404	Rohtak	GGSSS Mokhra	6140301915	IT/ITeS	Beauty & Wellness
405	Rohtak	GGSSS Kahanaur	6140101102	IT/ITeS	Beauty & Wellness
406	Rohtak	GSSS Khairari	6140101501	IT/ITeS	Phy. Edu. & Sports
407	Rohtak	GGSSS Sampla	6140502302	IT/ITeS	Beauty & Wellness
408	Rohtak	GSSS Samar Gopalpur	6140404201	IT/ITeS	Phy. Edu. & Sports
409	Rohtak	GSSS Makrauli Kalan	6140403201	IT/ITeS	Phy. Edu. & Sports
410	Rohtak	GSSS Sanghi	6140404401	IT/ITeS	Agriculture
411	Rohtak	GSSS Gudhan	6140100801	IT/ITeS	Retail
412	Rohtak	GSSS Gharawathi	6140200403	IT/ITeS	Retail
413	Rohtak	GSSS Sisar Khas	6140302401	IT/ITeS	Phy. Edu. & Sports
414	Rohtak	GSSS, Titoli	6140201302	IT/ITeS	Retail
415	Rohtak	GSSS, Pilana	6140102101	IT/ITeS	Retail
416	Rohtak	GSSS, Saimpal	6140102201	IT/ITeS	Beauty & Wellness
417	Rohtak	GSSS, Brahamanwas	6140400901	IT/ITeS	Apparel-Fashion Designer
418	Rohtak	GSSS Nindana	6140302101	IT/ITeS	Tourism & Travel
419	Rohtak	GSSS Singhpura Khurd	6140404801	IT/ITeS	Agriculture
420	Sirsa	GSSS Balasar	6110600503	IT/ITeS	Agriculture
421	Sirsa	GSSS Dholpalia	6110301302	IT/ITeS	Healthcare PCA
422	Sirsa	GSSS Rania	6110605804	IT/ITeS	Retail
423	Sirsa	GSSS Chakkan	6110601003	IT/ITeS	Beauty & Wellness
424	Sirsa	AMSSS Kaluana	6110203607	IT/ITeS	Agriculture
425	Sirsa	GSSS Alikan	6110100102	IT/ITeS	Agriculture
426	Sirsa	GSSS Bapp	6110100904	IT/ITeS	Tourism & Travel
427	Sirsa	GSSS Phaggu	6110103203	IT/ITeS	Banking & Finance Services
428	Sirsa	GSSS Rori	6110103704	IT/ITeS	Security
429	Sirsa	GSSS Sukhchain	6110104202	IT/ITeS	Agriculture
430	Sirsa	GSSS Ahmadpur Darewala	6110200203	IT/ITeS	Healthcare VT
431	Sirsa	GSSS Bijuwali	6110200702	IT/ITeS	Tourism & Travel



432	Sirsa	GSSS Chautala	6110201003	IT/ITeS	Banking & Finance Services
433	Sirsa	GGSSS Chautala	6110201004	IT/ITeS	Healthcare VT
434	Sirsa	GGSSS Mandi Dabwali	6110201104	IT/ITeS	Healthcare VT
435	Sirsa	GSSS Desu Jodha	6110201304	IT/ITeS	Banking & Finance Services
436	Sirsa	GSSS Ganga	6110202507	IT/ITeS	Agriculture
437	Sirsa	GSSS Kaluana	6110203604	IT/ITeS	Agriculture
438	Sirsa	GSSS Mangiana	6110204103	IT/ITeS	Beauty & Wellness
439	Sirsa	GSSS Bhurat Wala	6110300502	IT/ITeS	Healthcare PCA
440	Sirsa	GSSS Kuttabadh	6110302804	IT/ITeS	Beauty & Wellness
441	Sirsa	GSSS Malekan	6110302903	IT/ITeS	Banking & Finance Services
442	Sirsa	GSSS Mehna Khera	6110303305	IT/ITeS	Agriculture
443	Sirsa	GSSS Mithi Sureran	6110303704	IT/ITeS	Agriculture
444	Sirsa	GSSS Dhukra	6110401302	IT/ITeS	Apparel-Fashion Designer
445	Sirsa	GSSS Gudiakhera	6110401703	IT/ITeS	Beauty & Wellness
446	Sirsa	GSSS Jodhkan	6110402203	IT/ITeS	Agriculture
447	Sirsa	GSSS Rampura Dhillon	6110404403	IT/ITeS	Agriculture
448	Sirsa	GSSS Rupawas	6110405002	IT/ITeS	Healthcare VT
449	Sirsa	GSSS Shahpuria	6110405203	IT/ITeS	Tourism & Travel
450	Sirsa	GSSS Sherpura	6110405403	IT/ITeS	Healthcare VT
451	Sirsa	GSSS Pipli	6110502703	IT/ITeS	Beauty & Wellness
452	Sirsa	GSSS Bahia	6110600402	IT/ITeS	Agriculture
453	Sirsa	GSSS Bani	6110600603	IT/ITeS	Beauty & Wellness
454	Sirsa	GSSS Keharwala	6110603003	IT/ITeS	Beauty & Wellness
455	Sirsa	GSSS Bajekan	6110700303	IT/ITeS	Agriculture
456	Sirsa	GSSS Darbi	6110701003	IT/ITeS	Retail
457	Sirsa	GSSS Farwain Kalan	6110701502	IT/ITeS	Banking & Insurance Services
458	Sirsa	GSSS Kanwarpura	6110702202	IT/ITeS	Agriculture
459	Sirsa	GSSS Madhosinghana	6110703003	IT/ITeS	Beauty & Wellness

460	Sirsa	GSSS Nejadela Kalan	6110703903	IT/ITeS	Security
461	Sirsa	GSSS Patli Dabar	6110704102	IT/ITeS	Beauty & Wellness
462	Sirsa	GSSS Suchan	6110705304	IT/ITeS	Agriculture
463	Sirsa	GSSS Mangala	6110705805	IT/ITeS	Beauty & Wellness
464	Sonipat	GSSS Mahara	6080104902	IT/ITeS	Healthcare VT
465	Sonipat	GSSS Baroli	6080100302	IT/ITeS	Healthcare VT
466	Sonipat	GSSS Tihar Baghru	6080107702	IT/ITeS	Retail
467	Sonipat	GSSS Agwanpur	6080300102	IT/ITeS	Healthcare PCA
468	Sonipat	GGSSS Bhatgaon	6080101304	IT/ITeS	Beauty & Wellness
469	Sonipat	GSSS Malikpur	6080105002	IT/ITeS	Healthcare PCA
470	Sonipat	GSSS Garh Mirkpur	6080201502	IT/ITeS	Phy. Edu. & Sports
471	Sonipat	GGSSS Deepalpur	6080201402	IT/ITeS	Beauty & Wellness
472	Sonipat	GSSS Saragthal	6080503403	IT/ITeS	Healthcare PCA
473	Sonipat	GGSSS Shamri	6080602604	IT/ITeS	Beauty & Wellness
474	Sonipat	GSSS Rukhi	6080503203	IT/ITeS	Healthcare PCA
475	Sonipat	GGSSS Madina	6080701402	IT/ITeS	Healthcare PCA
476	Sonipat	GSSS Chhichhrana	6080700802	IT/ITeS	Healthcare PCA
477	Sonipat	GSSS Asadpur Nandnaur	6080100204	IT/ITeS	Healthcare PCA
478	Sonipat	GSSS Khubru	6080304203	IT/ITeS	Phy. Edu. & Sports
479	Sonipat	GSSS Khewra	6080203304	IT/ITeS	Healthcare PCA
480	Sonipat	GSSS Barwasni	6080100802	IT/ITeS	Healthcare VT
481	Sonipat	GSSS Murthal	6080105406	IT/ITeS	Banking & Finance Services
482	Sonipat	GSSS Shahzadpur	6080106902	IT/ITeS	Healthcare VT
483	Sonipat	GSSS Barota	6080500402	IT/ITeS	Healthcare VT
484	Sonipat	GSSS Mahmudpur	6080602103	IT/ITeS	Beauty & Wellness
485	Yamuna Nagar	GSSS Bherthal	6030109801	IT/ITeS	Banking & Finance Services
486	Yamuna Nagar	GSSS Mugal Wali	6030110701	IT/ITeS	Security
487	Yamuna Nagar	GSSS Khurdban	6030200101	IT/ITeS	Agriculture
488	Yamuna Nagar	GSSS Atawa	6030201101	IT/ITeS	Healthcare PCA

489	Yamuna Nagar	GGSSS Chhachhrauli	6030407103	IT/ITeS	Retail
490	Yamuna Nagar	GSSS Sialba	6030503601	IT/ITeS	Beauty & Wellness
491	Yamunanagar	GSSS Kharwan	6030409701	IT/ITeS	Retail
492	Yamunanagar	GSSS Bilaspur	6030104202	IT/ITeS	Phy. Edu. & Sports
493	Yamunanagar	GSSS Kot Kalsia	6030413001	IT/ITeS	Retail
494	Yamunanagar	GSSS Harnaul	6030309903	IT/ITeS	Agriculture
495	Yamunanagar	GSSS Kunjal Jattan	6030304701	IT/ITeS	Retail
496	Yamunanagar	SNV GSSS Model Town	6030311802	IT/ITeS	Retail
497	Yamunanagar	GSSS Jathlana	6030206101	IT/ITeS	Healthcare PCA
498	Yamunanagar	GSSS Gundiana	6030502401	IT/ITeS	Security
499	Yamunanagar	GSSS Saran	6030502002	IT/ITeS	Retail
500	Yamunanagar	GSSS Gumthala Rao	6030204701	IT/ITeS	Security

## Annexure-V

## Details of components approved by PAB 2016-17

S.No	Activity		Proposal of State			Final Approved Outlay		
			Physical	Unit Cost	Financial	Physical	Unit Cost	Financial
1	2		3	4	5	7	8	9
<b>RMSA</b>								
<b>Non - Recurring</b>								
1	<b>Building for New Schools already approved in Previous Year</b>							
1.1	1 Section School		1	67.154	67.154	1	67.15	67.15
1.2	2 Section School		1	82.09	82.090	1	71.82	71.82
<b>Total for Building for New Schools already approved in Previous Year</b>					<b>149.244</b>			<b>138.97</b>
2	<b>Strengthening of Existing Schools</b>							
2.1	Additional Classroom		109	7.468	814.012	42	7.46	313.32
2.2	Art/Craft Room		63	6.868	432.684	50	6.86	343.00
2.3	Computer Room		9	6.918	62.262	8	6.91	55.28
2.4	Drinking Water		1	0.576	0.576	1	0.5	0.50
2.5	Lab Equipment (Sci Lab)		71	1	71.000	29	1	29.00
2.6	Library Room		44	10.035	441.540	24	10.035	240.84
2.7	Science Lab		71	8.141	578.011	29	8.14	236.06
<b>Total for Strengthening of Existing Schools</b>					<b>2400.085</b>			<b>1218.00</b>
<b>Total for Non - Recurring</b>					<b>2549.329</b>			<b>1356.97</b>
<b>Recurring</b>								
3	<b>Annual Grant</b>							
3.1	School Grant		3245	0.5	1622.500	3245	0.5	1622.50
<b>Total for Annual Grant</b>					<b>1622.500</b>			<b>1622.50</b>
4	<b>Staff for Previous Year Schools</b>							
4.1	Head Master not in Position		29	0	0.000	29	1.4427	41.84
4.2	Head Masters		29	6.01584	174.459	29	5.7708	167.35
4.3	Subject Teacher		185	4.38528	811.277	99	3.81972	378.15

	4.4	Teachers not in Position	105	0	0.000	191	0.95493	182.39
	<b>Total for Staff for Previous Year Schools</b>				<b>985.736</b>			<b>769.73</b>
5	<b>Additional Staff for Existing Schools</b>							
	5.1	Additional Teachers	7223	9.90639	71553.855	7223	3.81972	27589.84
	<b>Total for Additional Staff for Existing Schools</b>				<b>71553.855</b>			<b>27589.84</b>
6	<b>Community Mobilisation</b>							
	4.1	SMDC Training	9735	0.006	58.410	608	0.006	3.64
	<b>Total for Community Mobilisation</b>				<b>58.410</b>			<b>3.64</b>
7	<b>Training</b>							
	7.1	In service training of Teachers including HMs in Teaching (ICT , IEDSS, RMSA etc.)	3600	0.03	108.000	1231	0.03	36.93
	7.2	School Leadership Management Course (Residential)	0	0	0.000	25	0.12	3.00
	7.3	Training for Educational officer (DEO's)	161	0.015	2.415	21	0.009	0.19
	7.4	Training of HMs (SLDP)	100	0.036	3.600	100	0.036	3.60
	<b>Total for Training</b>				<b>114.015</b>			<b>43.72</b>
8	<b>Quality Components</b>							
	8.1	Question Bank	3245	0.0505	163.873	3245	0.05	163.87
	<b>Total for Quality Components</b>				<b>163.873</b>			<b>163.87</b>
9	<b>Project on Science &amp; Maths - (RAA)</b>							
	9.1	Excursion Trip for Students within State	21	0.545	11.445	2100	0.002	4.20
	9.2	Learning Enhancement (Remedial teaching)	74423	0.006	446.538	42323	0.005	211.61
	9.3	Science Exhibition / Book Fair	21	2	42.000	21	1	21.00
	9.4	Science Kit	3245	0.0159	51.596	3245	0.0159	51.60
	<b>Total for Project on Science &amp; Maths - (RAA)</b>				<b>551.579</b>			<b>288.41</b>
10	<b>Project on English</b>							

	10.1	Inservice Training for English Teachers	74423	0.003	223.269	432	0.003	1.30
	<b>Total for Project on English</b>				<b>223.269</b>			<b>1.30</b>
11	<b>Project Kala Utsav</b>							
	11.1	Kala Utsav	1	84.135	84.135	1	11	11.00
	<b>Total for Project Kala Utsav</b>				<b>84.135</b>			<b>11.000</b>
12	<b>Project Sports &amp; Tournaments</b>							
	12.1	Sports Kit	105	0.2	21.000	21	0.5	10.50
	<b>Total for Project Sports &amp; Tournaments</b>				<b>21.000</b>			<b>10.50</b>
13	<b>Project- Girls Empowerment</b>							
	13.1	Career Guidance Programme for Girls	119	5	595.000	10	0.5	5.00
	13.2	Training in Marshal Arts to all girls / Self Defence	1000	0.135	135.000	1000	0.09	90.00
	<b>Total for Project- Girls Empowerment</b>				<b>730.000</b>			<b>95.00</b>
<b>Total for Recurring</b>					<b>76108.372</b>			<b>30599.51</b>
<b>Total for RMSA</b>					<b>78657.701</b>			<b>31956.48</b>
<b>ICT</b>								
<b>Non - Recurring</b>								
14	<b>BOOT Model</b>							
	14.1	Hardware & Software Support - BOOT Model	135	6.4	864.000	87	6.4	556.80
	<b>Total for BOOT Model</b>				<b>864.000</b>			<b>556.80</b>
<b>Total for Non - Recurring</b>					<b>864.000</b>			<b>556.80</b>
<b>Recurring</b>								
15	<b>Salary of Computer Teacher</b>							
	15.1	Outright Purchase (Recurring)	3117	3.6	11221.200	1609	1.2	1930.80
	<b>Total for Salary of Computer Teacher</b>				<b>11221.200</b>			<b>1930.80</b>
16	<b>Other Recurring Components</b>							
	16.1	Computer, Stationery (Printer, Cartridges, CD-ROMs, DVD, paper etc.)	3117	1.65923	5171.820	1609	1.2	1930.80
	<b>Total for Other Recurring</b>				<b>5171.82</b>			<b>1930.80</b>

	<b>Components</b>							
<b>Total for Recurring</b>					<b>16393.02</b>			<b>3861.60</b>
<b>Total for ICT</b>					<b>17257.02</b>			<b>4418.40</b>
<b>IEDSS</b>								
<b>Recurring</b>								
17	<b>Recurring</b>							
17.1	Environment Building programme	120	1.50979	181.175	119	0.1	11.90	
17.2	In-service Training of Special Educators	300	0.03	9.000	300	0.03	9.00	
17.3	Orientation of Principals, Educational administrators, parents / guardians etc.	13638	0.00552	75.282	7000	0.009	63.00	
17.4	Salary (New Spl. Educators )	170	1.12191	190.725	170	0.54	91.80	
17.5	Salary (Previous Spl. Educators)	307	2.63529	809.034	300	2.59306	777.91	
17.6	Special Pay For Special Educator	300	0.048	14.400	300	0.048	14.40	
<b>Total for Recurring</b>					<b>1279.616</b>			<b>968.01</b>
18	<b>Student Oriented Activities</b>							
18.1	Books & Stationery (Inc. Braille Books for Blind and Large Print Books for Low Vision)	1179	0.03327	39.225	4555	0.00861	39.22	
18.2	Escort Allowance	927	0.03	27.810	927	0.03	27.81	
18.3	Identification and Assessment (Medical Assessment Camps))	4553	0.002	9.106	4553	0.002	9.10	
18.4	Providing Aids & Appliances	754	0.02	15.080	754	0.02	15.08	
18.5	Stipend for Girls	2063	0.022	45.386	1989	0.022	43.76	
<b>Total for Student Oriented Activities</b>					<b>136.607</b>			<b>134.97</b>
<b>Total for Recurring</b>					<b>1416.223</b>			<b>1102.98</b>
<b>Total for IEDSS</b>					<b>1416.223</b>			<b>1102.98</b>
<b>VE</b>								
<b>Non - Recurring</b>								
19	<b>Introduction of VE in schools</b>							
19.1	Tools, Equipment & Furniture	256	11.5	2944.000	500	6.066	3033.00	
19.2	Workshop / Laboratory	500	5	2500.000	95	5	475.00	

	<b>Total for Introduction of VE in schools</b>			<b>5444.000</b>			<b>3508.00</b>
<b>Total for Non - Recurring</b>				<b>5444.000</b>			<b>3508.00</b>
<b>Recurring</b>							
20	<b>Recurring support</b>						
20.1	Assessment and Certification Cost(Prev.)	490	0.92041	451.001	490	0.91	445.90
20.2	Cost of providing Hands Training Students(Prev.)	490	1.05231	515.632	490	1.041	510.09
20.3	Office Expenses / Contingencies for new school(Prev.)	490	1.5102	739.998	490	1.3878	680.02
20.4	Raw material grant for new school per course (Prev.)	490	1.96429	962.502	490	1.9429	952.02
20.5	Assessment and Certification Cost (New)	500	0.225	112.500	500	0.3	150.00
20.6	Cost of providing Hands on Skill Training to Students (New)	500	0.28126	140.630	500	0.375	187.50
20.7	Office Expenses / Contingencies for new school(New)	500	0.75	375.000	500	1	500.00
20.8	Raw material Grant for new school per course (New)	500	0.525	262.500	500	0.7	350.00
20.9	Flexible Pool for Engaging Resource Persons( prev.)	490	9.39541	4603.751	490	9.39541	4603.75
20.10	Flexible Pool for Engaging Resource Person (New)	500	5.4375	2718.750	500	7.25	3625.00
<b>Total for Recurring support</b>				<b>10882.264</b>			<b>12004.28</b>
21	<b>Teacher Training</b>						
21.1	In-service Training of Teachers for 1 week (Prev.)	490	0.12265	60.098	1360	0.03	40.80
21.2	Induction training of Teachers (4 week)	500	0.22	110.000	1000	0.11	110.00
<b>Total for Teacher Training</b>				<b>170.098</b>			<b>150.80</b>
<b>Total for Recurring</b>				<b>11052.362</b>			<b>12155.08</b>
<b>Total for VE</b>				<b>16496.362</b>			<b>15663.08</b>



<b>GH</b>								
<b>Recurring</b>								
22	<b>Recurring</b>							
22.1	Asstt. Cook (Two)	74	0.972	71.928	33	0.51363	16.95	
22.2	Chowkidar	37	0.972	35.964	33	0.30818	10.17	
22.3	Electricity / Water per year	37	0.6	22.200	33	0.6	19.80	
22.4	Fooding/lodging expenditure for Girl Child	3700	0.165	610.500	3300	0.15409	508.49	
22.5	Head Cook (One)	37	1.188	43.956	33	0.30818	10.17	
22.6	Honorarium of Warden (in addition to her salary teacher)	37	3	111.000	33	0.51363	16.95	
22.7	Maintenance per year	37	0.4	14.800	33	0.4	13.20	
22.8	Medical care	3700	0.0075	27.750	3300	0.0075	24.75	
22.9	Miscellaneous	37	0.4	14.800	33	0.4	13.20	
22.10	News paper / Magazines and sports	37	0.24	8.880	33	0.20545	6.78	
22.11	Toiletries and sanitation	3700	0.011	40.700	33	1.0272	33.89	
<b>Total for Recurring</b>				<b>1002.478</b>			<b>674.36</b>	
<b>Total for Recurring</b>				<b>1002.478</b>			<b>674.36</b>	
<b>Total for GH</b>				<b>1002.478</b>			<b>674.36</b>	
<b>Total (RMSA+ VE+ ICT+ IEDSS+ GH)</b>							<b>53815.30</b>	
23	<b>MMER (Intg. RMSA) @ 3.5%</b>	1	1185	1185.000	1	1883.47	1883.53	
<b>Grand Total</b>				<b>116014.784</b>			<b>55698.83</b>	